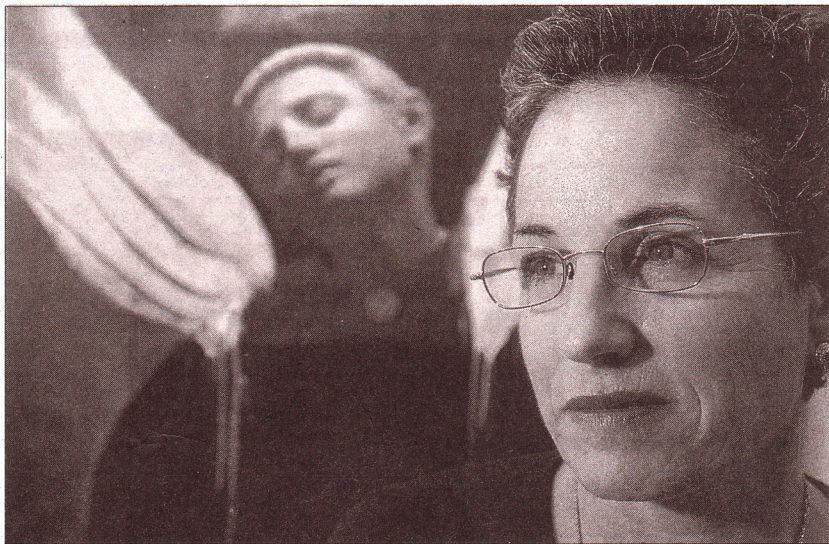


THE GALLERY



Soul-searching art

By **JULIE FLETCHER** • ORLANDO SENTINEL

As a native New Yorker, Lorraine Lax always found the rough streets of New York City fascinating. She had a particular interest in classical references as reflected in statuary, mannequins, faces on the street. For 30 years, she has pursued photos of those images with a vengeance, often finding herself in less than desirable locations to satisfy her obsession. Her search has taken her across the United States, Europe and the Middle East.

Today those images can be found in Lax's new work. Incorporating photographs, found objects and poetic statements, Lax has developed a series of spiritual, dreamlike pieces.

"I've often wondered why a person such as myself, known to have a warm, fun per-

sonality, would be so drawn to the macabre side of life. I've concluded that the images I choose all have a common thread," she says. "For the most part they appear lifeless, disturbed, sad or otherworldly, a reflection of the state of the universe."

Angels appear in all of Lax's oversized works, where muted colors and fragments of her personal writings reveal the petite artist's struggles with her own feelings about life and fear of dying — "expressing feelings that are inside of everyone."

Julie Fletcher can be reached at 407-402-7817 or jfletcher@orlandosentinel.com. You can see Lax's work in "Mind, Body and Soul," opening Friday at the Gallery at Avalon Island with a reception from 5 to 9 p.m. Call Lax at 407-740-0066 to learn more.